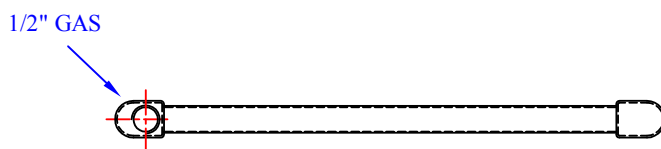


13+5= 18 Tubi - Pipes - Röhre

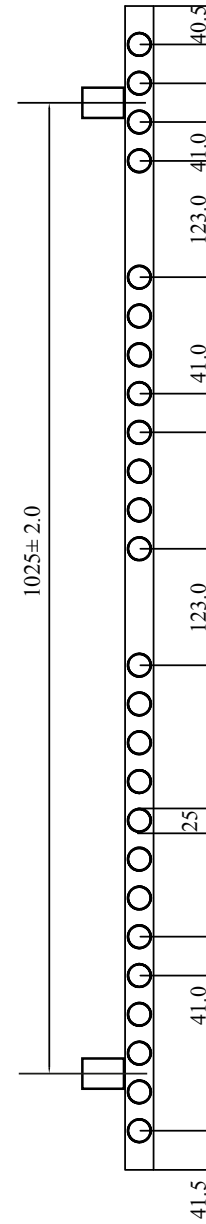
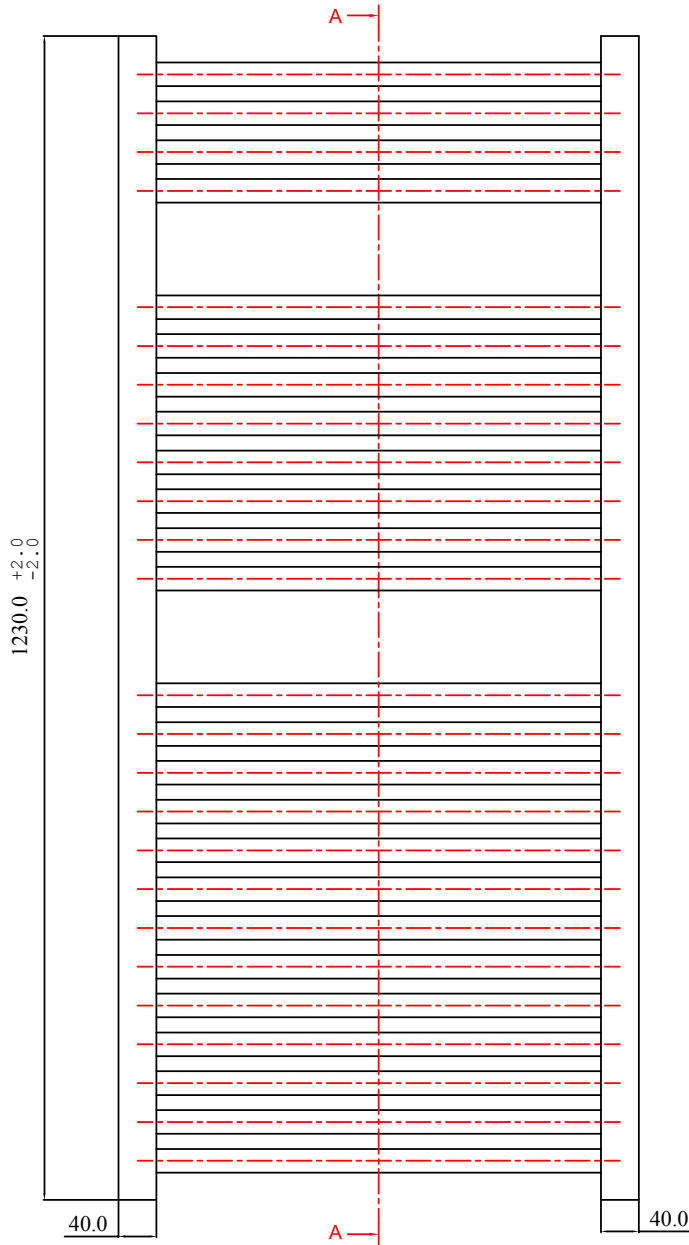
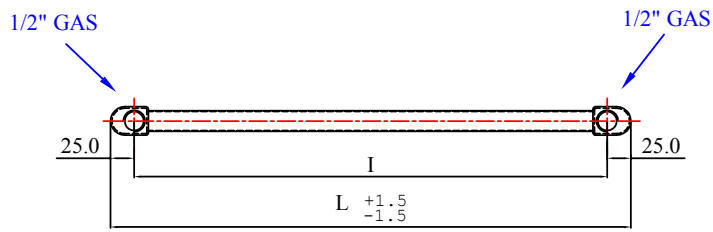
SECTION A-A



L	I
400	355
450	405
500	455
550	505
600	555

See catalogue or technical sheet for available widths for each finishing.

Wegen die Verfügbarkeit der versch. HzK.-Breiten je nach HzK.-Farbvariante, bitte Gesamtkatalog oder tech. Datenblatt ansehen.



13+8+4= 25 Tubi - Pipes - Röhre

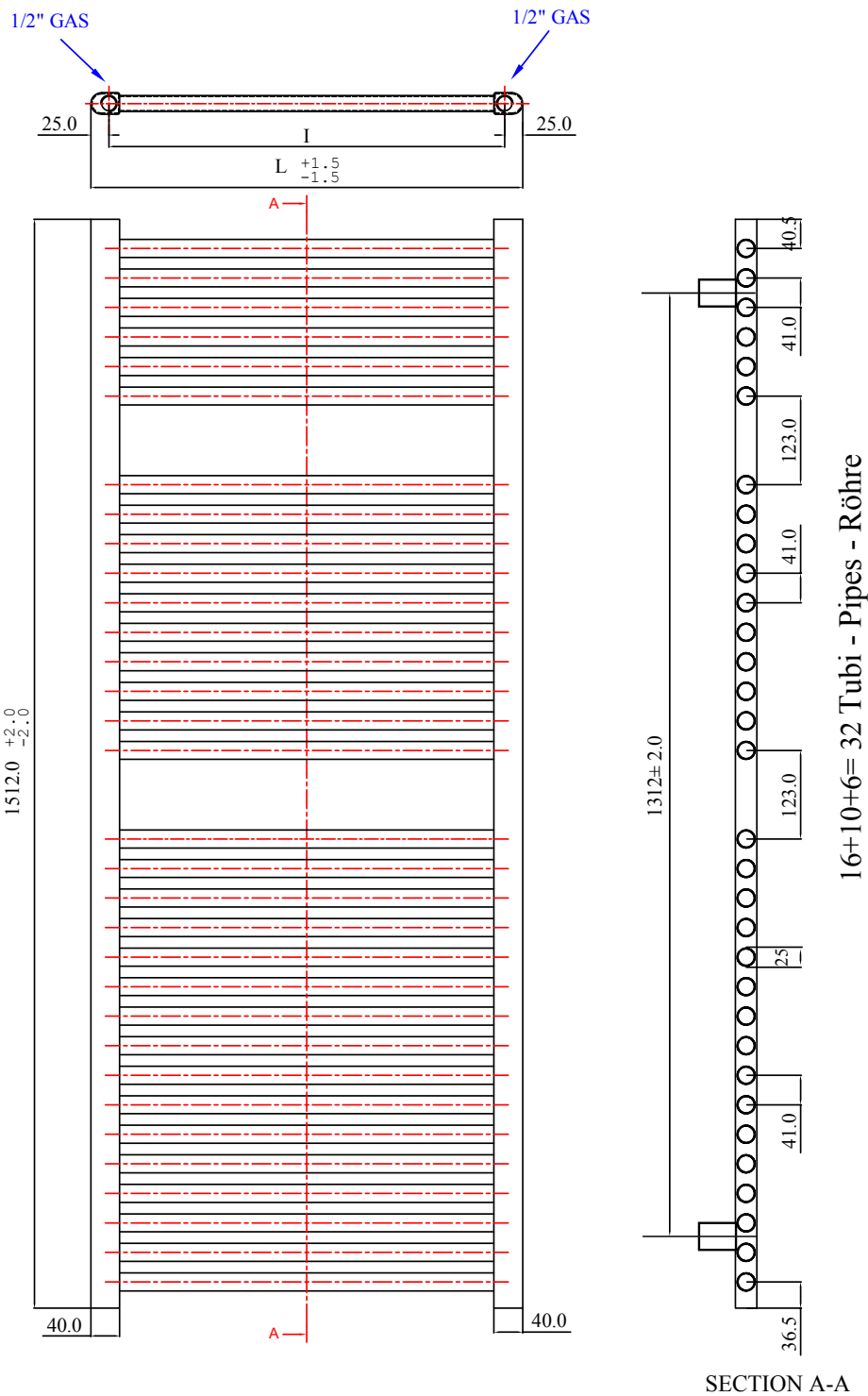
SECTION A-A



L	I
400	355
450	405
500	455
550	505
600	555
750	705

See catalogue or technical sheet for available widths for each finishing.

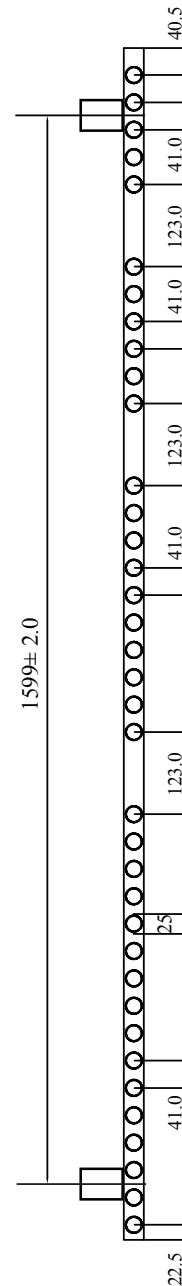
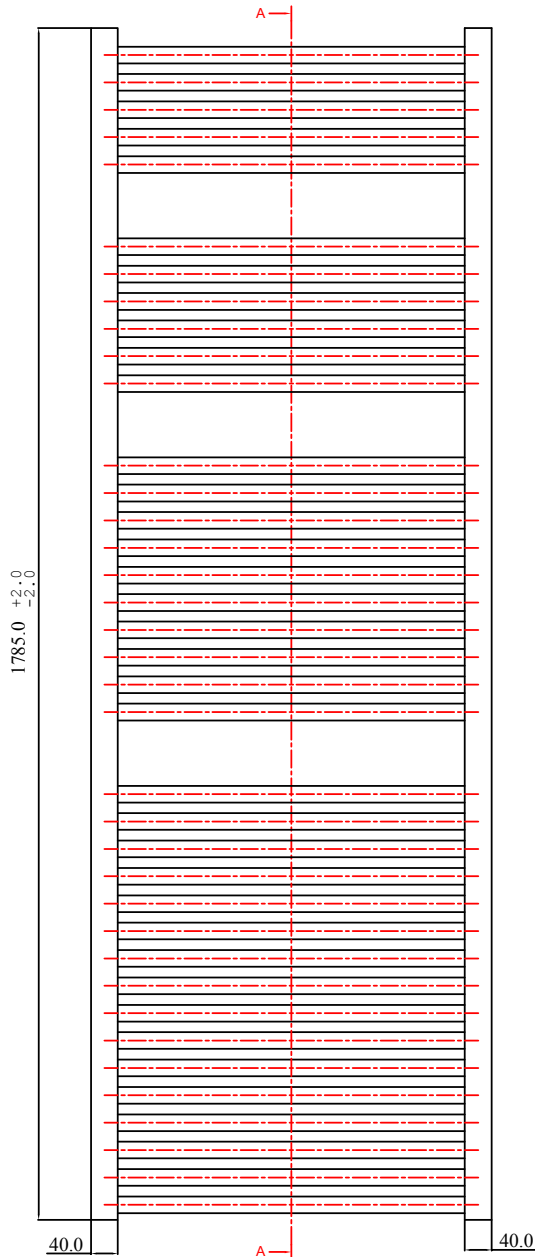
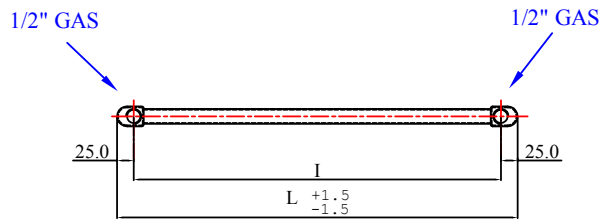
Wegen die Verfügbarkeit der versch. HzK.-Breiten je nach HzK.-Farbvariante, bitte Gesamtkatalog oder tech. Datenblatt ansehen.



L	I
400	355
450	405
500	455
550	505
600	555
750	705

See catalogue or technical sheet for available widths for each finishing.

Wegen die Verfügbarkeit der versch. HzK.-Breiten je nach HzK.-Farbvariante, bitte Gesamtkatalog oder tech. Datenblatt ansehen.



16+10+6+5= 37 Tubi - Pipes - Röhre

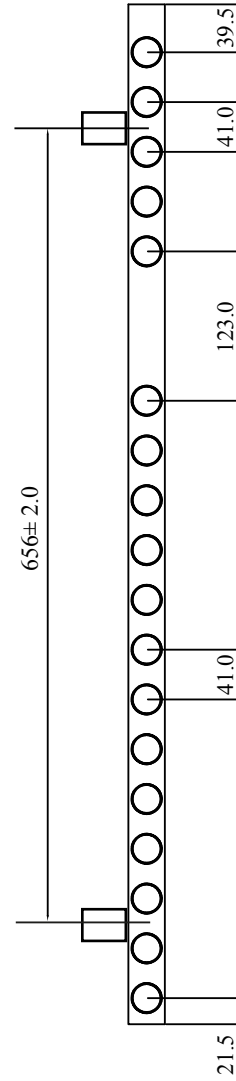
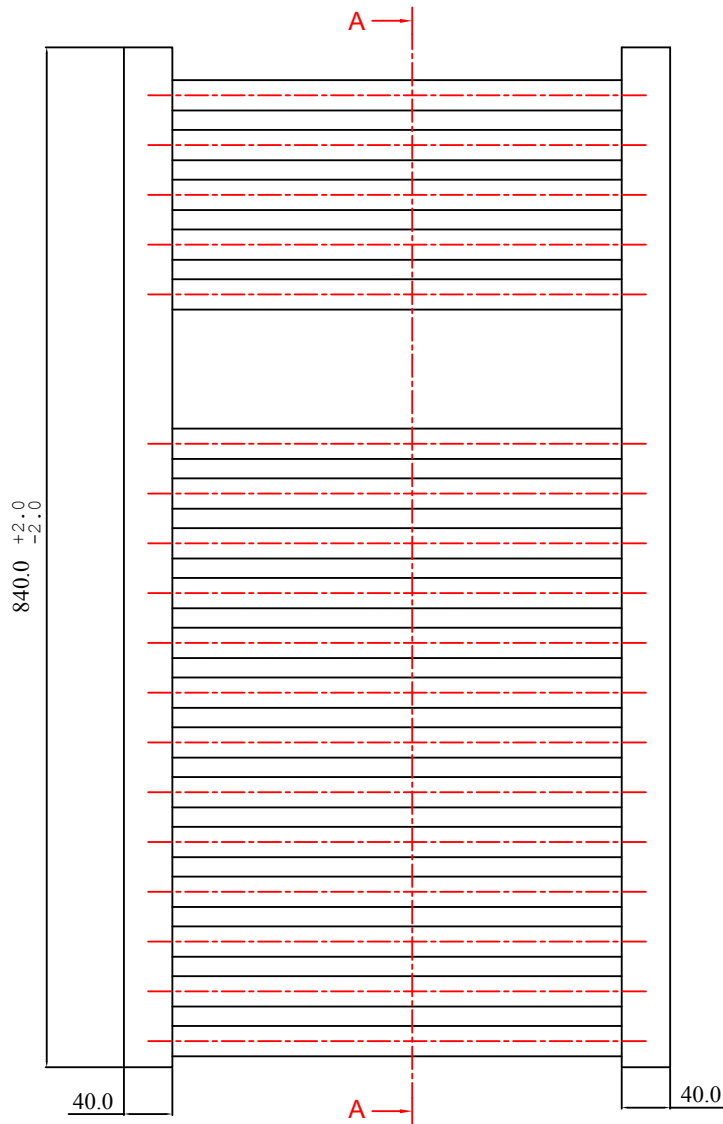
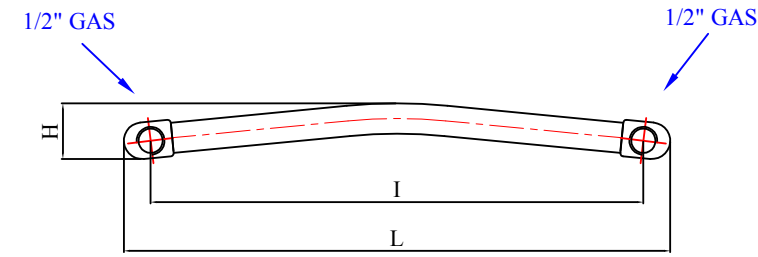
SECTION A-A



L	I
400	355
450	405
500	455
550	505
600	555
750	705

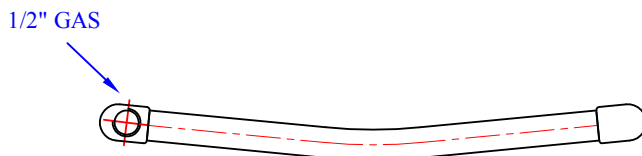
See catalogue or technical sheet for available widths for each finishing.

Wegen die Verfügbarkeit der versch. HzK.-Breiten je nach HzK.-Farbvariante, bitte Gesamtkatalog oder tech. Datenblatt ansehen.



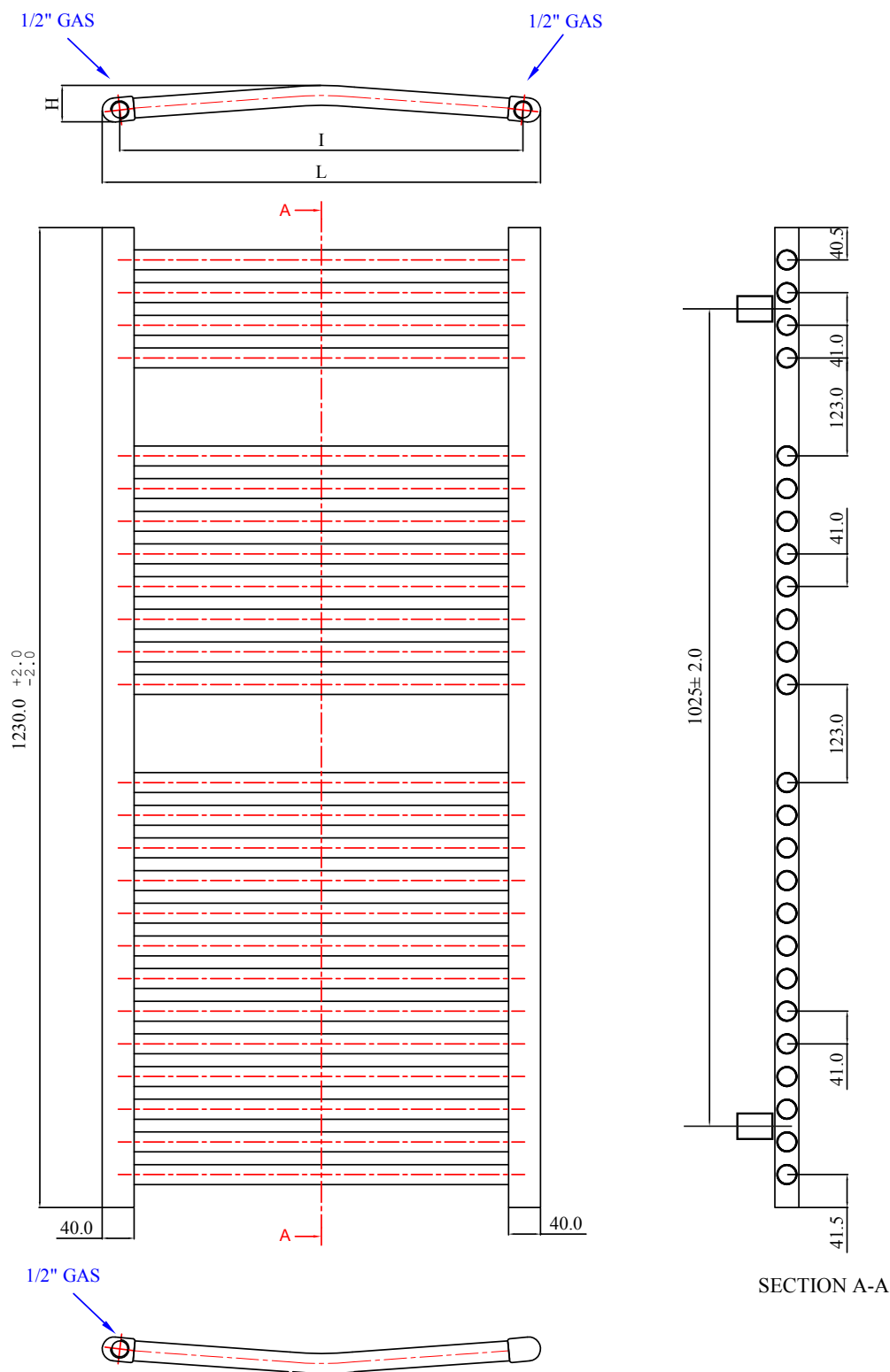
SECTION A-A

13+5= 18 Tubi - Pipes - Röhre



See catalogue or technical sheet for available widths for each finishing.  
Wegen die Verfügbarkeit der versch. HzK.-Breiten je nach HzK.-Farbvariante, bitte Gesamtkatalog oder tech. Datenblatt ansehen.

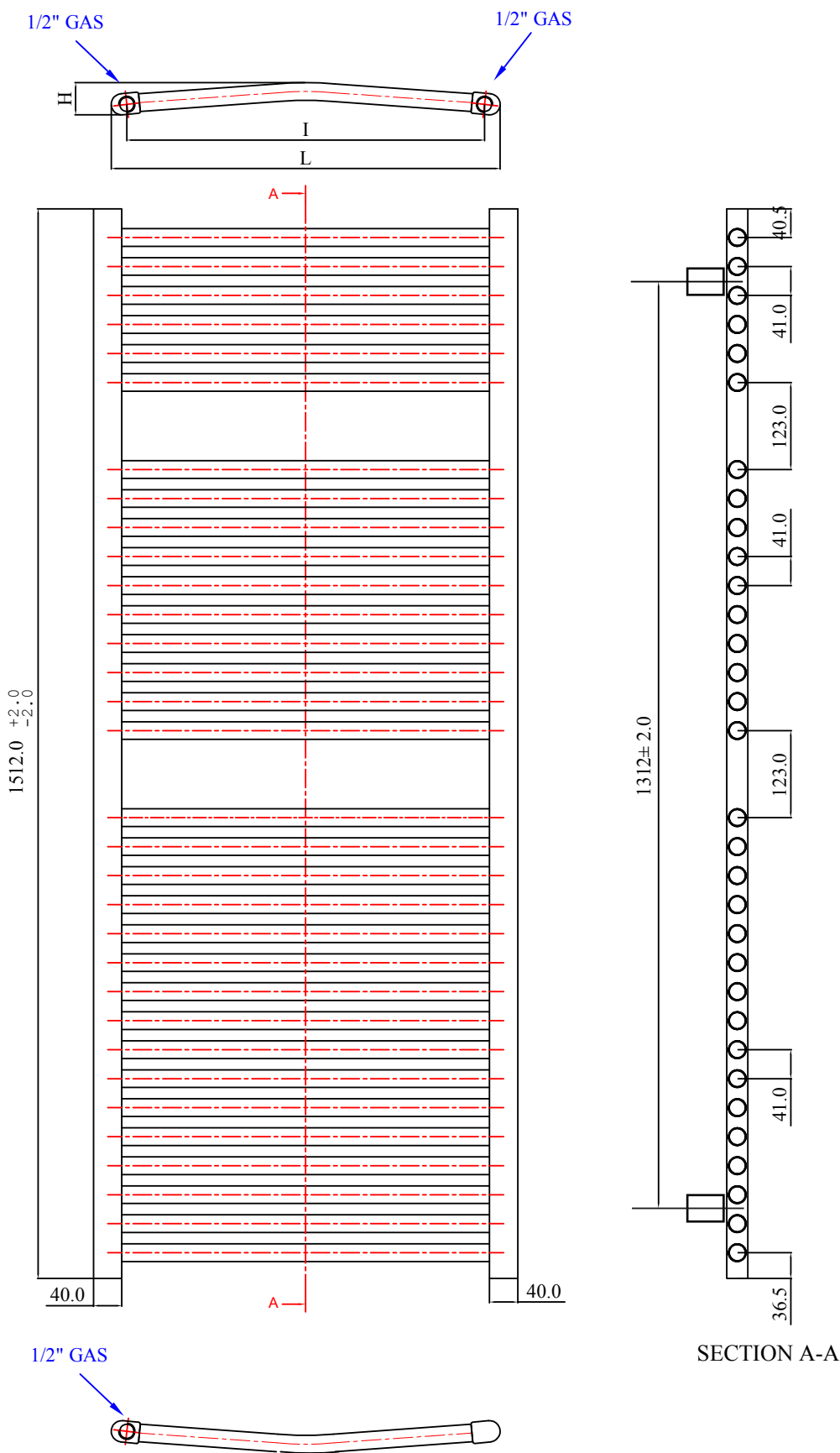
L	I	H
500	450	45
600	550	47



13+8+4= 25 Tubi - Pipes - Röhre

SECTION A-A

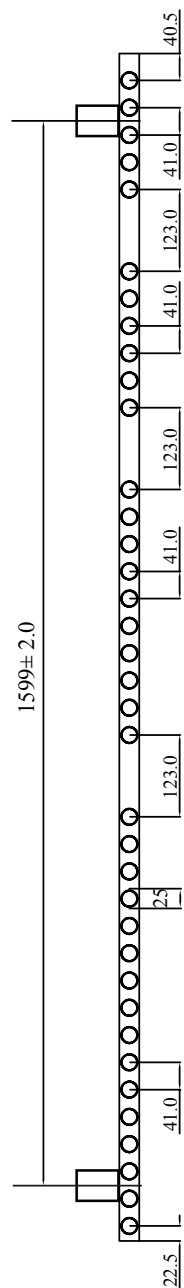
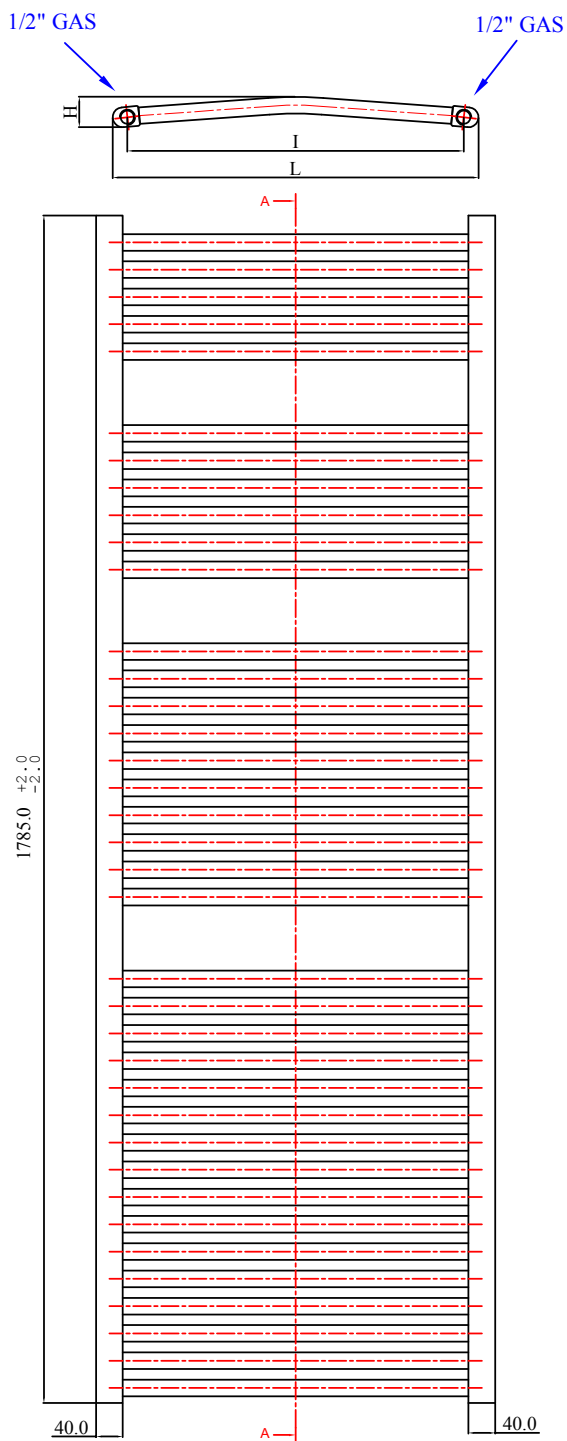
L	I	H
500	450	45
600	550	47



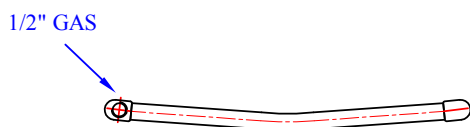
16+10+6= 32 Tubi - Pipes - Röhre

SECTION A-A

L	I	H
500	450	45
600	550	47



16+10+6+5=37 Tubi - Röhre



SECTION A-A

L	I	H
500	450	45
600	550	47